



The coupling allows to establish a connection by simply fitting both coupling parts into each other. Before load relieving of the coupling seats the pressure- and vacuum tight coupling is sealed inside with an O-ring during the coupling process. The coupling is forced to be open in coupled position. If both coupling sides are separated again the sealing seats shut off automatically.

All couplings are temperature-resistant from -40 °C to +80 °C.

In special version these couplings are also available for a temperature range of -60 °C to +80 °C.

The suitable connecting parts for DILO couplings must be ordered separately.

DILO couplings DN8

■ VK/A-02/8	DILO couplings DN8 / PN64 DN8.....	34
■ VK/B(G)-03/8	Coupling groove part PN64 DN8 with O-ring.....	35
■ SK-272-R001	Flange coupling PN64 DN8.....	36
■ SK-272-R003	Flange coupling PN64 DN8.....	37
■ 3-778-R001	Flange coupling PN64 DN8 with 2-hole flange.....	38
■ VK/KN-04/8	Covering cap für coupling groove part PN64 DN8.....	39
■ 3VK/F-02/8	Coupling tongue part PN64 DN8.....	40
■ 6-1161-R011	Coupling tongue part PN64 DN8 with connecting coupling for measuring device.....	41
■ SK-372-R020/ R021	Gauge connecting coupling PN64 DN8.....	42

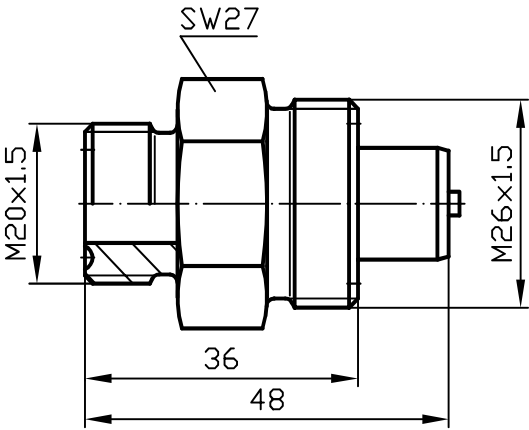
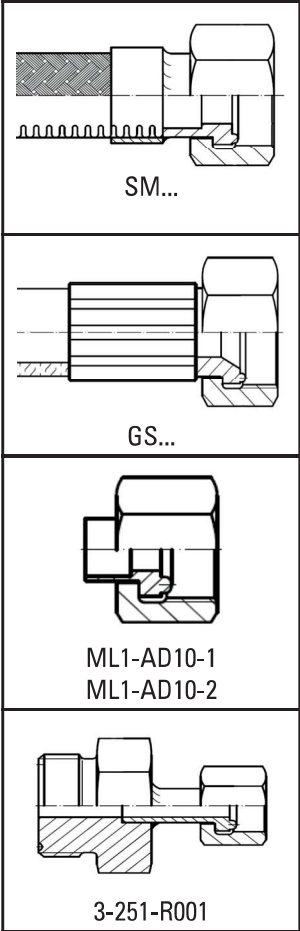
PN64 DN8

COUPLING GROOVE PART

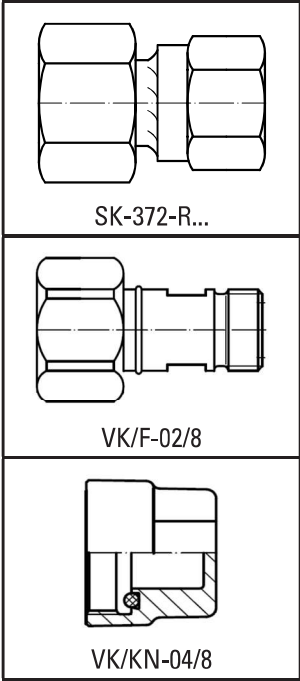


Order No.	Material
VK/A-02/8 T	AL
VK/A-02/8 E	Stainless steel
VK/A-02/8 P	Brass

Suitable connecting parts



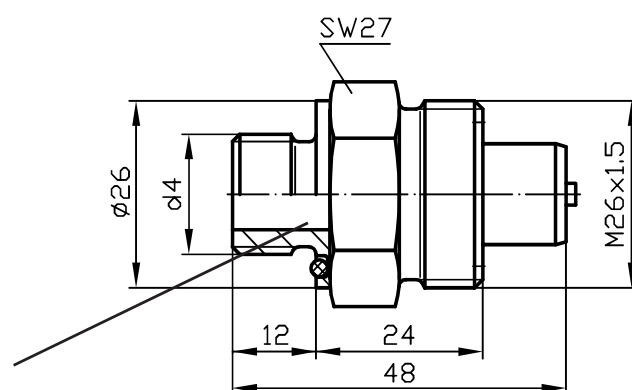
Suitable connecting parts



PN64 DN8
COUPLING GROOVE PART WITH O-RING

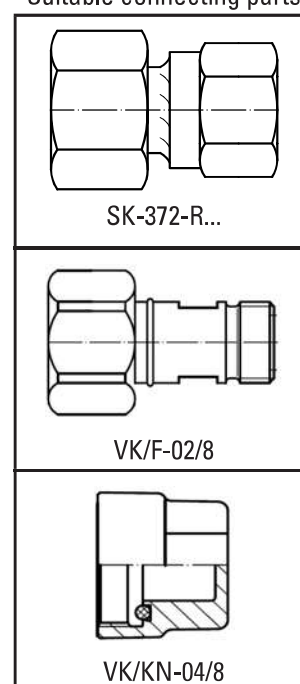


d4	Order No.	Material
M16 x 1,5	VK/B-03/8 T	AL
M16 x 1,5	VK/B-03/8 E	Stainless steel
M16 x 1,5	VK/B-03/8 H	Brass
G 3/8 A	VK/BG-03/8 T	AL
G 3/8 A	VK/BG-03/8 E	Stainless steel
G 3/8 A	VK/BG-03/8 H	Brass



Spare O-ring
Bestell-Nr. 05-0057-R016

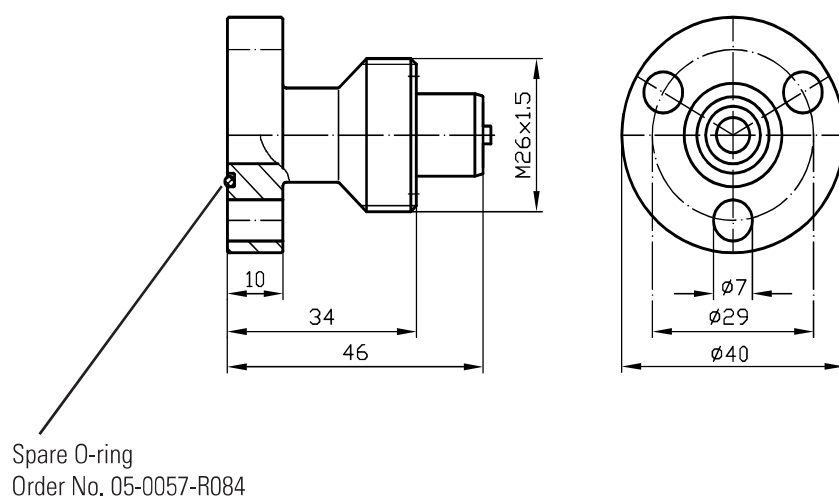
Suitable connecting parts



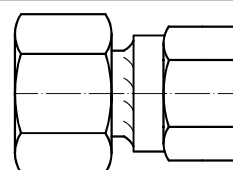
In special version the screw-in thread can also be supplied with sealing edge according to DIN 3852-1 and DIN EN ISO 1179.

PN64 DN8 FLANGE COUPLING

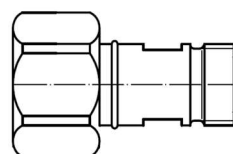
Order No.: SK-272-R001 T
Material: AL



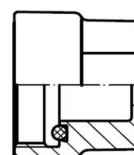
Suitable connecting parts



SK-372-R...



VK/F-02/8



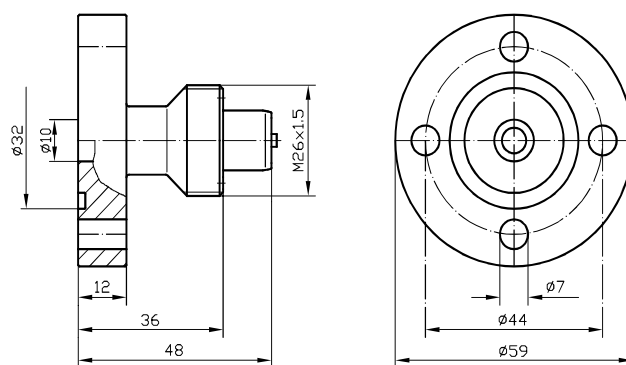
VK/KN-04/8

Other flanges are available on request.

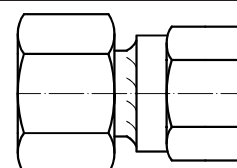
PN64 DN8
FLANGE COUPLING



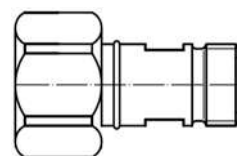
Order No.: SK-272-R003 T
Material: AL



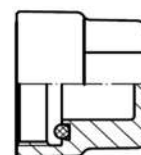
Suitable connecting parts



SK-372-R...



VK/F-02/8

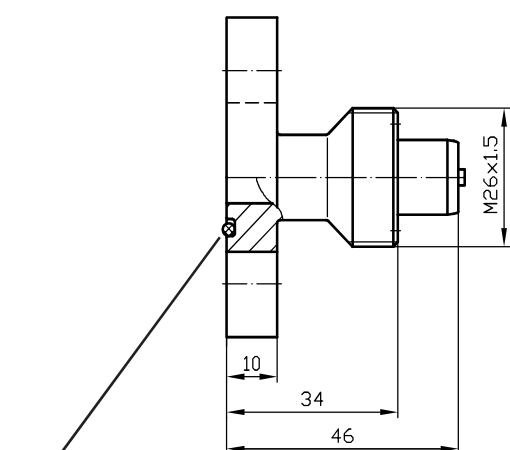


VK/KN-04/8

Other flanges are available on request.

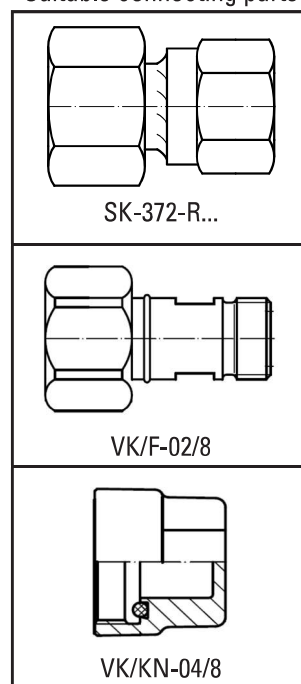
PN64 DN8 **FLANGE COUPLING WITH 2-HOLE FLANGE**

Order No.: 3-778-R001 T
 Material: AL



Spare O-ring
 Order No. 05-0057-R125

Suitable connecting parts

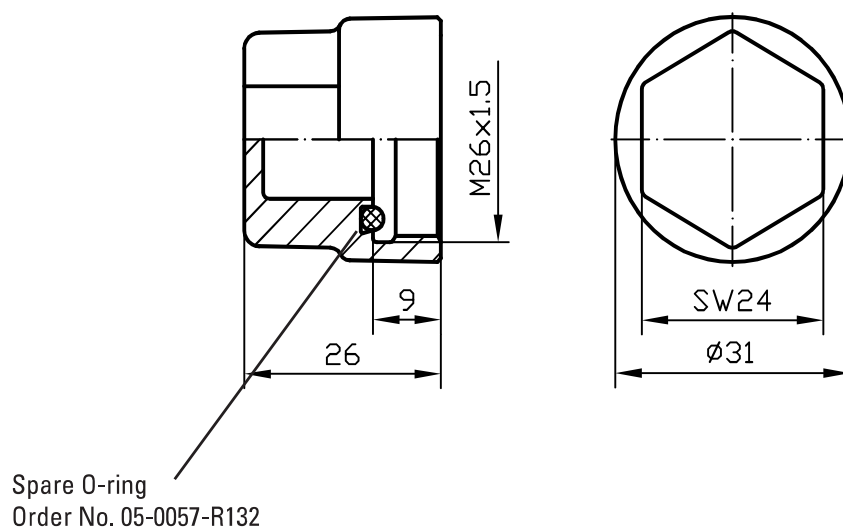


Other flanges are available on request.

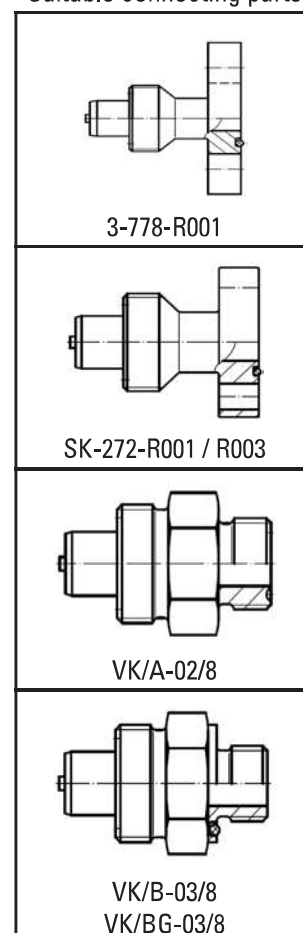
PN64 DN8
COVERING CAP FOR COUPLING GROOVE PART



Order No.	Material
VK/KN-04/8 T	AL
VK/KN-04/8 E	Stainless steel



Suitable connecting parts

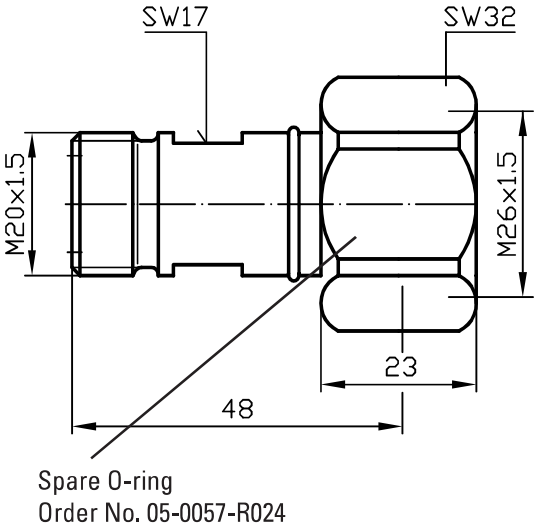
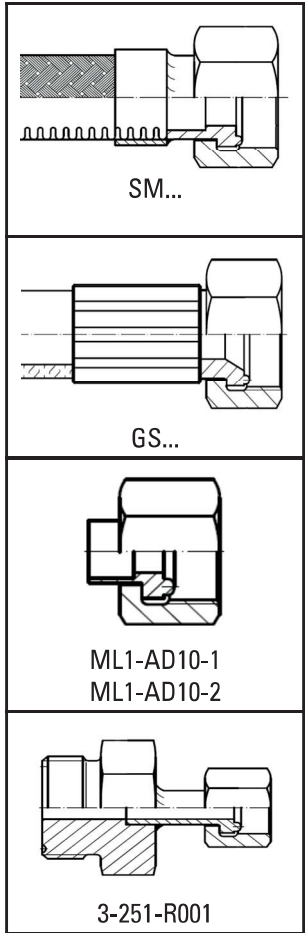


PN64 DN8
COUPLING TONGUE PART

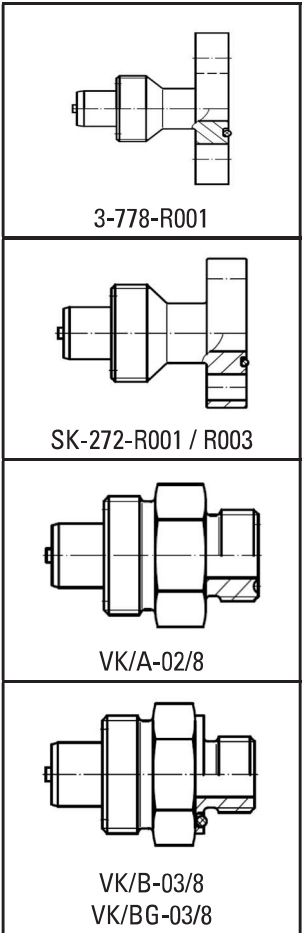


Order No.	Material
VK/F-02/8 T	AL
VK/F-02/8 E	Stainless steel
VK/F-02/8 P	Brass

Suitable connecting parts



Suitable connecting parts



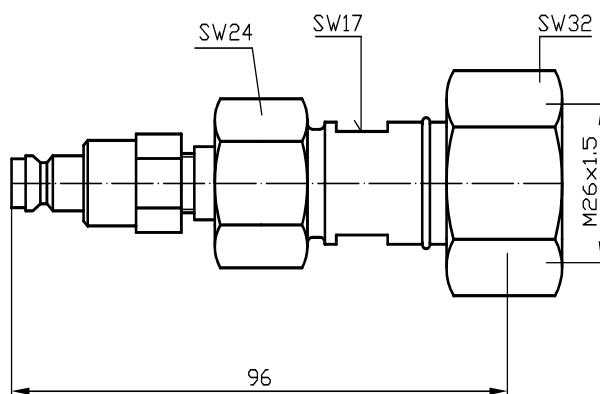
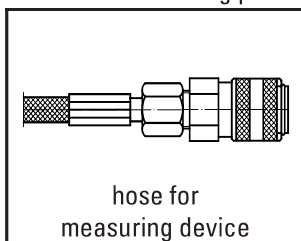
PN35 DN8
COUPLING TONGUE PART
with connecting coupling for measuring device



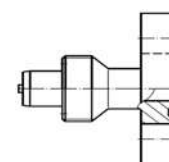
Order No.: 6-1161-R011
Material: Brass



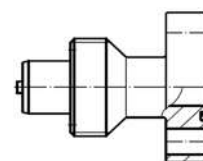
Suitable connecting parts



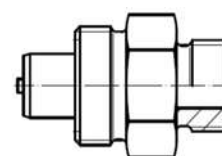
Suitable connecting parts



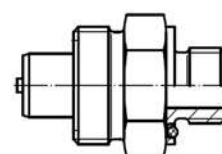
3-778-R001



SK-272-R001 / R003



VK/A-02/8



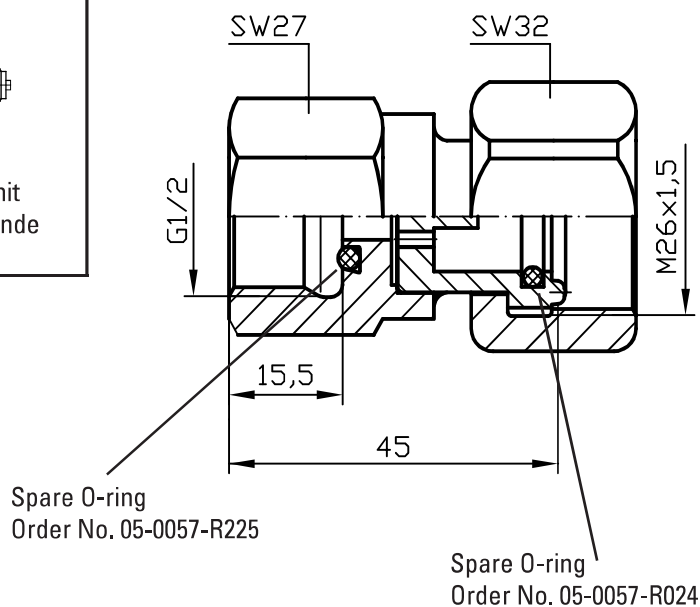
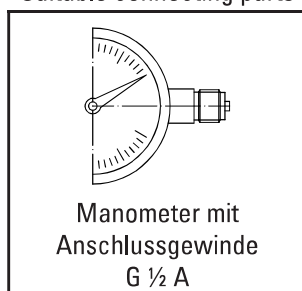
VK/B-03/8
VK/BG-03/8

PN64 DN8 GAUGE CONNECTING COUPLING



Order No.	Material
SK-372-R020 P	Brass
SK-372-R021 C	Stainless steel

Suitable connecting parts



Description

The gauge connecting coupling serves as connecting piece to a coupling groove part DN8. When coupling, a pin in the gauge connecting coupling opens the flow of the opposite coupling groove part (forced opening). This allows to read the present operating pressure on the screwed-in gauge. When disconnecting, the conical nipple of the groove part is closed by spring load (pressure and vacuum tight). If the gauge connecting coupling is not connected the gauge shows „zero pressure“. The connecting coupling allows to install the gauge in any required position (rotatable 360°)

Suitable connecting parts

