



The coupling allows to establish a connection by simply fitting both coupling parts into each other. Before load relieving of the coupling seats the pressure- and vacuum tight coupling is sealed inside with an O-ring during the coupling process. The coupling is forced to be open in coupled position. If both coupling sides are separated again the sealing seats shut off automatically.

All couplings are temperature-resistant from -40 °C to +80 °C.

In special version these couplings are also available for a temperature range of -60 °C to +80 °C.

The suitable connecting parts for DILO couplings must be ordered separately.

DILO couplings DN20

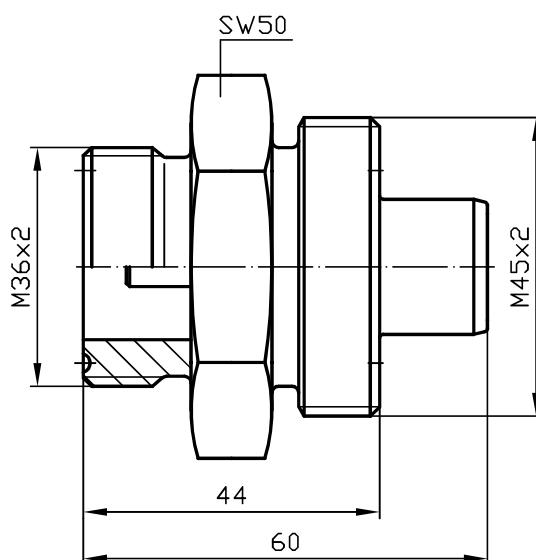
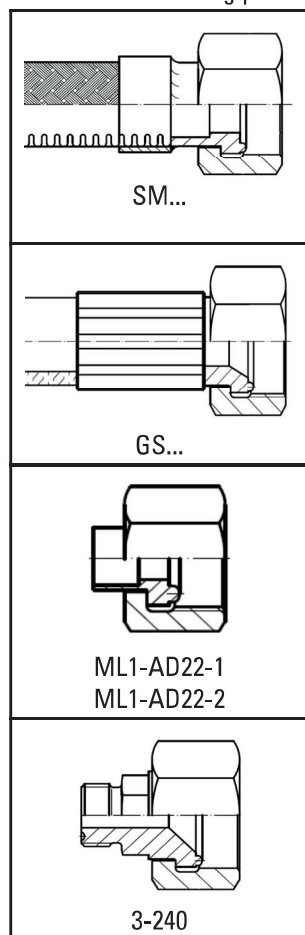
■ VK/A-02/20	Coupling groove part PN64 DN20.....	58
■ VK/B(G)-03/20	Coupling groove part PN64 DN20 with O-ring.....	59
■ VK/FL-01/20	Flange coupling PN64 DN20.....	60
■ 3-777-R001	Flange coupling PN64 DN20 with 2-hole flange.....	61
■ 3-685-R001	Flange coupling PN64 DN20.....	62
■ VK/KN-04/20	Covering cap for coupling groove part PN64 DN20	63
■ VK/F-02/20	Coupling tongue part PN64 DN20.....	64
■ 3-1121-R003	Quick coupling DN20.....	65
■ 6-1161-R012	Coupling tongue part PN64 DN20 with connecting coupling for measuring device	66
■ 6-1206-R001	Coupling tongue part PN64 DN20.....	67
■ 6-1092-R006	Transition piece PN64 DN20.....	68
■ 6-1281-R001	Coupling tongue part with air filter.....	69
■ SK-282-R020	Gauge connecting coupling PN64 DN20.....	70

PN64 DN20 COUPLING GROOVE PART

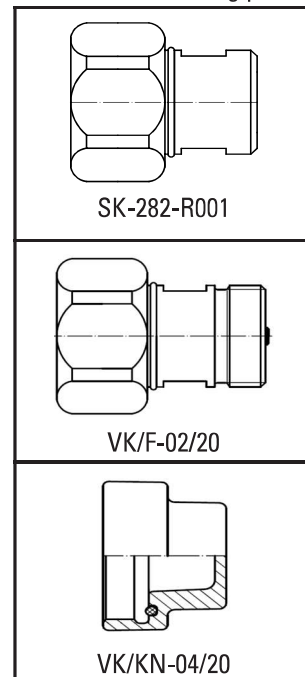


Order No.	Material
VK/A-02/20 T	AL
VK/A-02/20 P	Brass
VK/A-02/20 E	Stainless steel

Suitable connecting parts



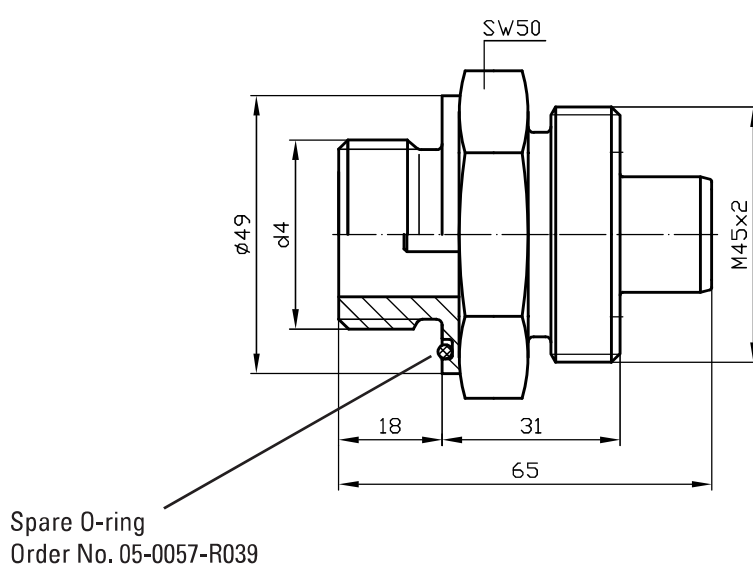
Suitable connecting parts



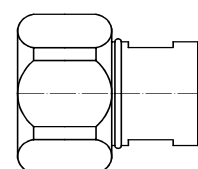
PN64 DN20
COUPLING GROOVE PART WITH O-RING



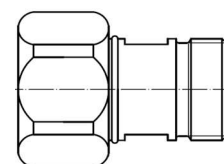
d4	Order No.	Material
M33 x 2	VK/B-03/20 T	AL
M33 x 2	VK/B-03/20 E	Stainless steel
M33 x 2	VK/B-03/20 P	Brass
G 1 A	VK/BG-03/20 T	AL
G 1 A	VK/BG-03/20 E	Stainless steel
G 1 A	VK/BG-03/20 P	Brass



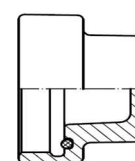
Suitable connecting parts



SK-282-R001



VK/F-02/20



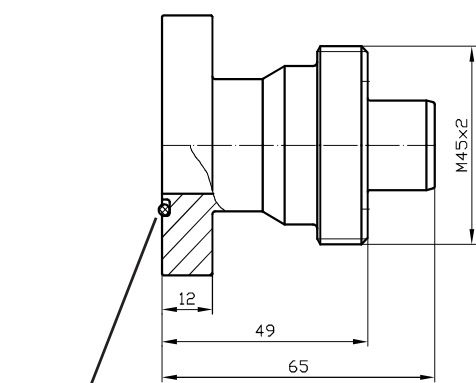
VK/KN-04/20

In special version the screw-in thread can also be supplied with sealing edge according to DIN 3852-1 and DIN EN ISO 1179.

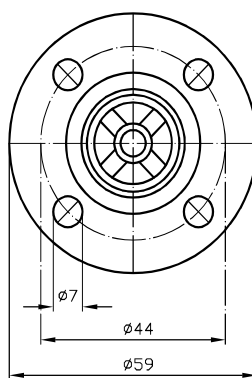
PN64 DN20 FLANGE COUPLING



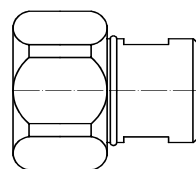
Order No.	Material
VK/FL-01/20 T	AL
VK/FL-01/20 E	Stainless steel



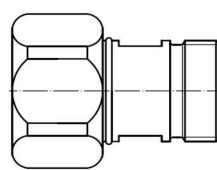
Spare O-ring
Order No. 05-0057-R030



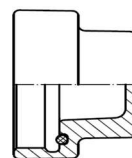
Suitable connecting parts



SK-282-R001



VK/F-02/20



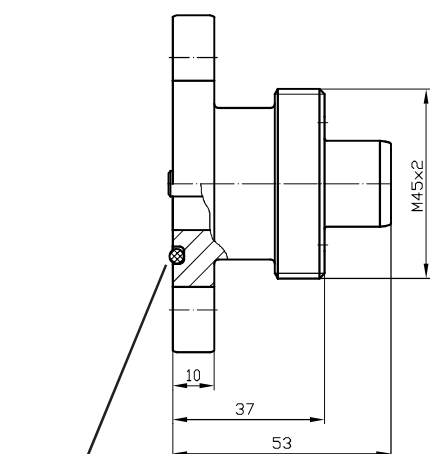
VK/KN-04/20

Other flanges are available on request.

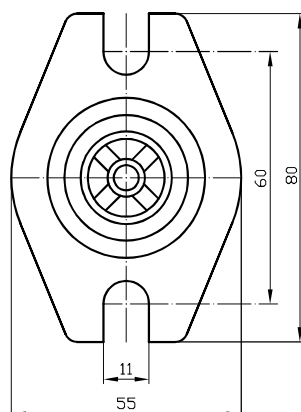
PN64 DN20
FLANGE COUPLING WITH 2-HOLE FLANGE



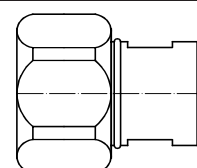
Order No.: 3-777-R001 T
 Material: AL



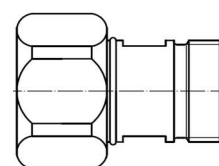
Spare O-ring
 Order No. 05-0057-R098



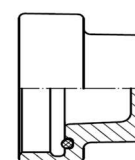
Suitable connecting parts



SK-282-R001



VK/F-02/20

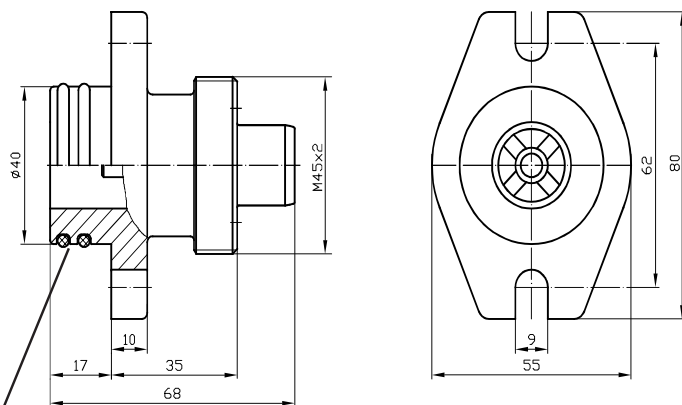


VK/KN-04/20

Other flanges are available on request.

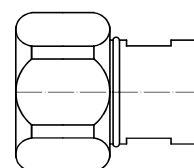
PN64 DN20 FLANGE COUPLING

Order No.: 3-685-R001 T
Material: AL

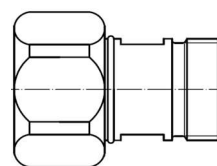


Spare O-ring
Order No. 05-0057-R116

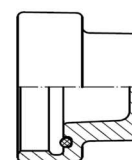
Suitable connecting parts



SK-282-R001



VK/F-02/20



VK/KN-04/20

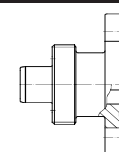
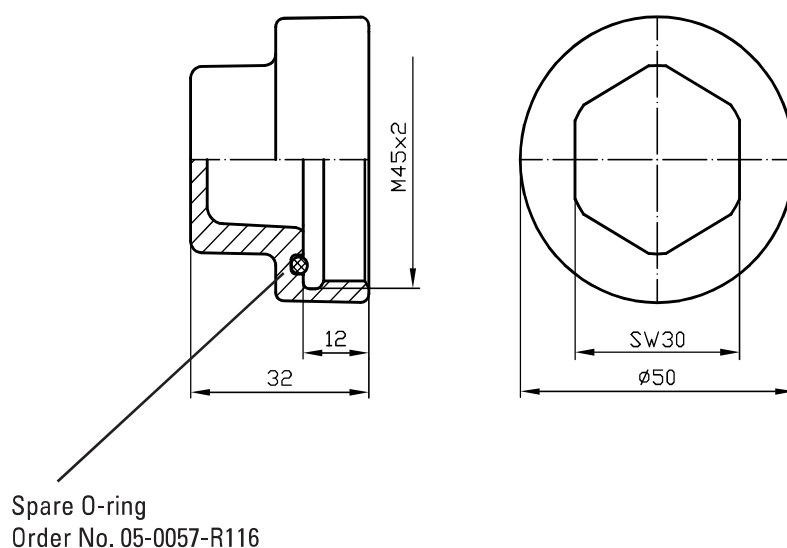
Other flanges are available on request.

PN64 DN20
COVERING CAP FOR COUPLING GROOVE PART

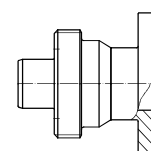


Order No.	Material
VK/KN-04/20 T	AL
VK/KN-04/20 E	Stainless steel
VK/KN-04/20 PA	Plastic material

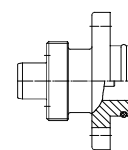
Suitable connecting parts



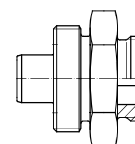
3-777-R001



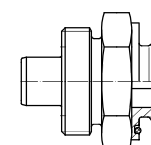
VK/FL-01/20



3-685-R001



VK/A-02/20



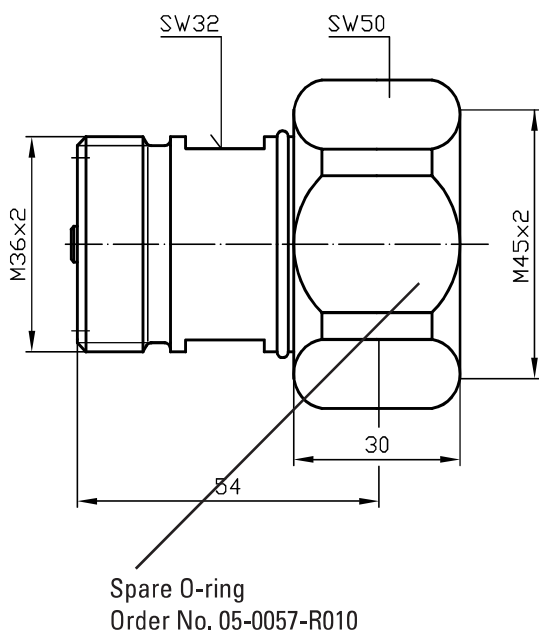
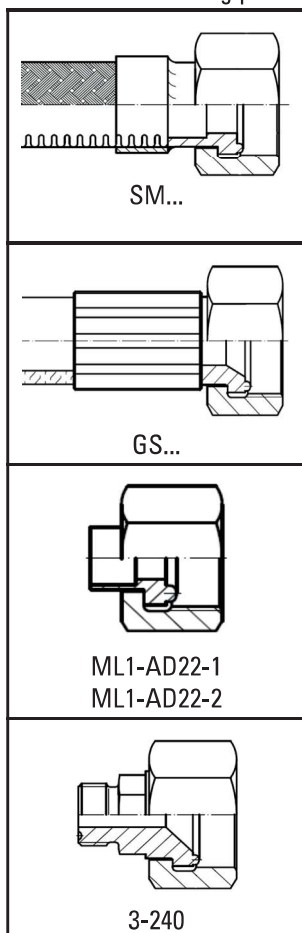
VK/B-03/20
VK/BG-03/20

PN64 DN20 COUPLING TONGUE PART

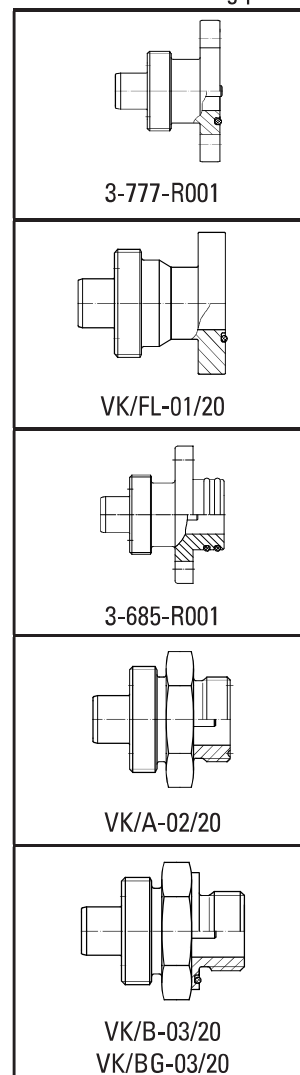


Order No.	Material
VK/F-02/20 T	AL
VK/F-02/20 E	Stainless steel
VK/F-02/20 P	Brass

Suitable connecting parts



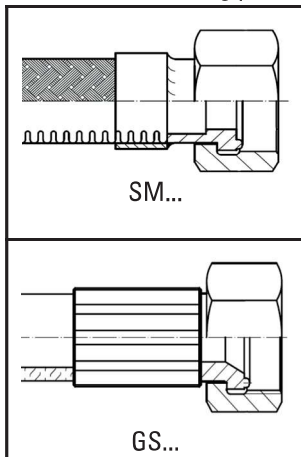
Suitable connecting parts



3-1121-R003 QUICK COUPLING DN20 / PN10



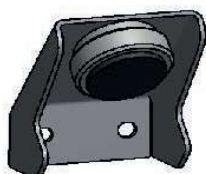
Suitable connecting parts



closed coupling



open coupling



Mount for safe fixation on the wall
and as dust protection
Article-No. 3-1121-R093

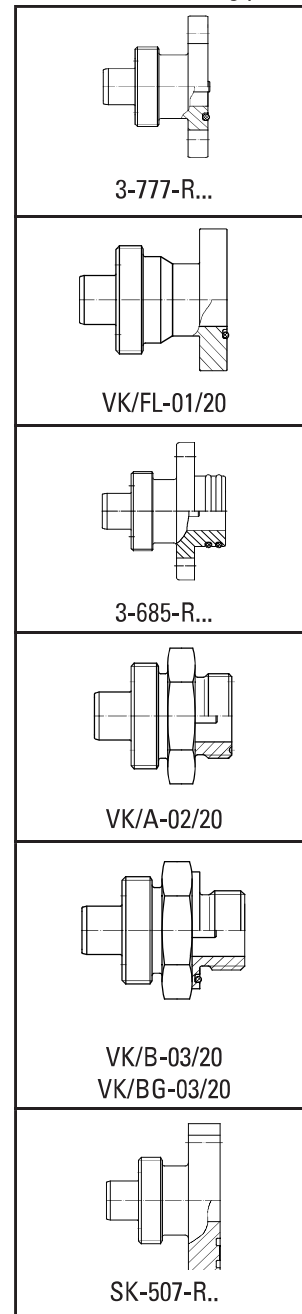
For easy coupling and uncoupling of hoses

The quick coupling is very useful in all fields of application where hoses have to be frequently loosened and reconnected e. g. during final tests of completely mounted GIS fields. Thanks to the clamp lock the DN20 hoses can easily be connected without any loss of SF6 gas. Thus the handling times in GIS production are shortened and productivity is increased considerably.

Important note:

The quick coupling is only compatible with DILLO coupling groove parts of version 2 (additional "V2" stamp on the flange or wrench size).

Suitable connecting parts



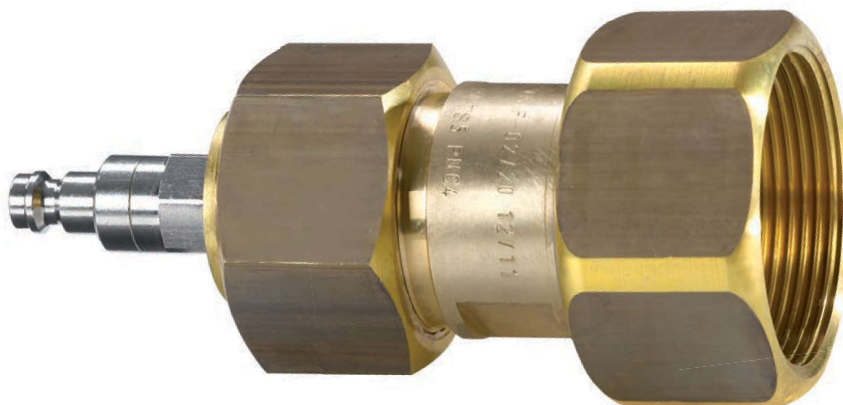
Please see our
product video!



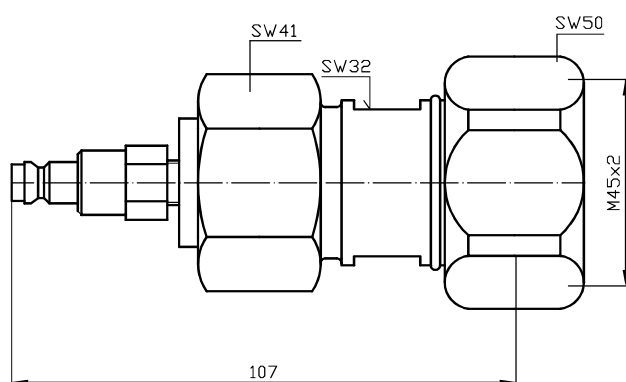
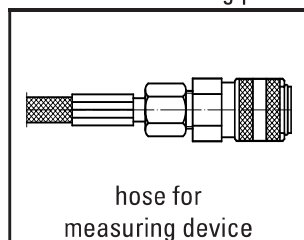
PN35 DN20
COUPLING TONGUE PART
 with connecting coupling for measuring device

Order No.: 6-1161-R012

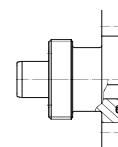
Material: Messing



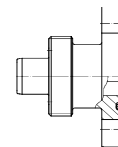
Suitable connecting parts



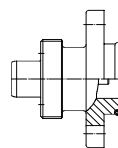
Suitable connecting parts



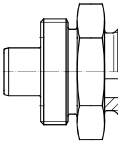
3-777-R001



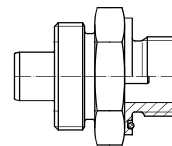
VK/FL-01/20



3-685-R001



VK/A-02/20



VK/B-03/20
VK/BG-03/20

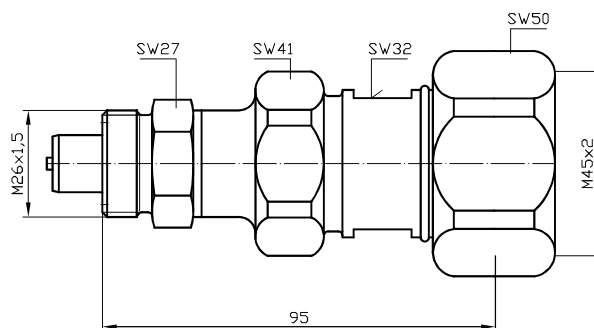
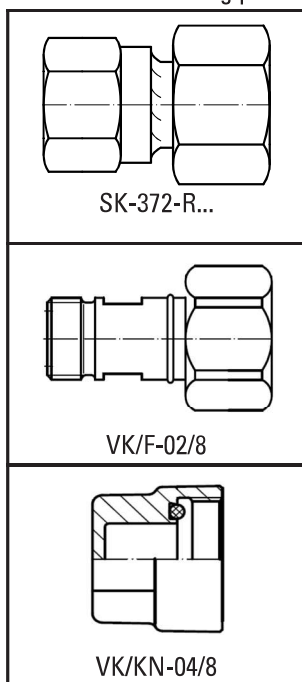
PN64 DN20
COUPLING TONGUE PART



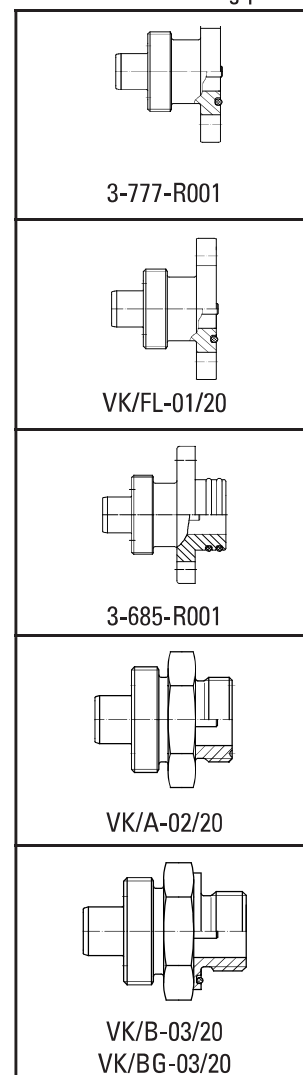
Order No.: 6-1206-R001
Material: Messing



Suitable connecting parts



Suitable connecting parts



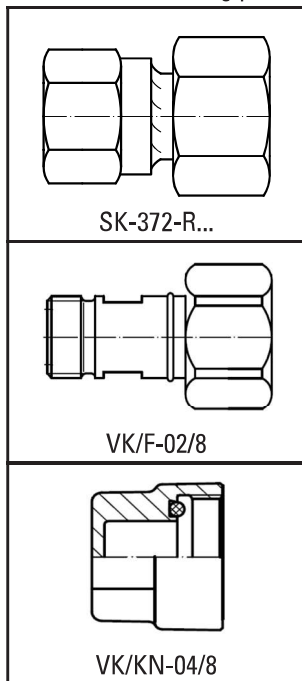
PN64 DN20 / DN8 TRANSITION PIECE

Order No.: 6-1092-R006

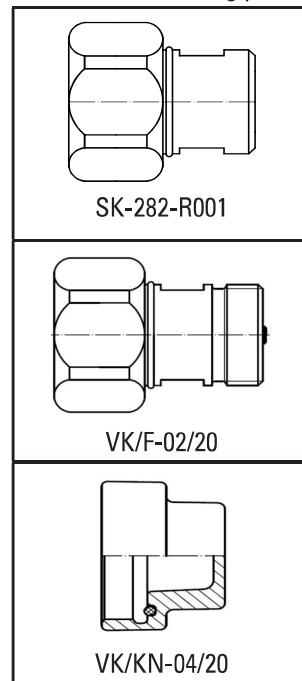
Material: Brass



Suitable connecting parts



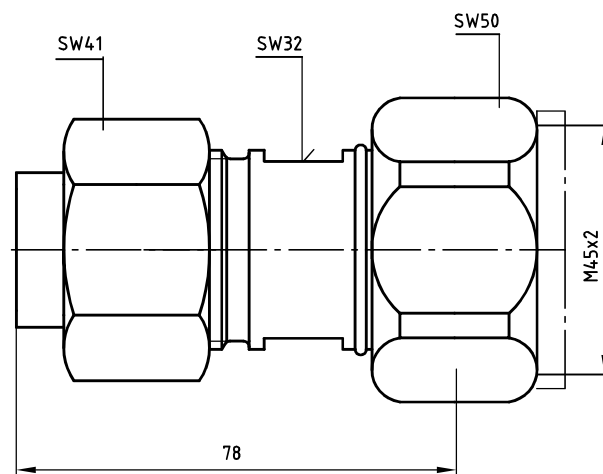
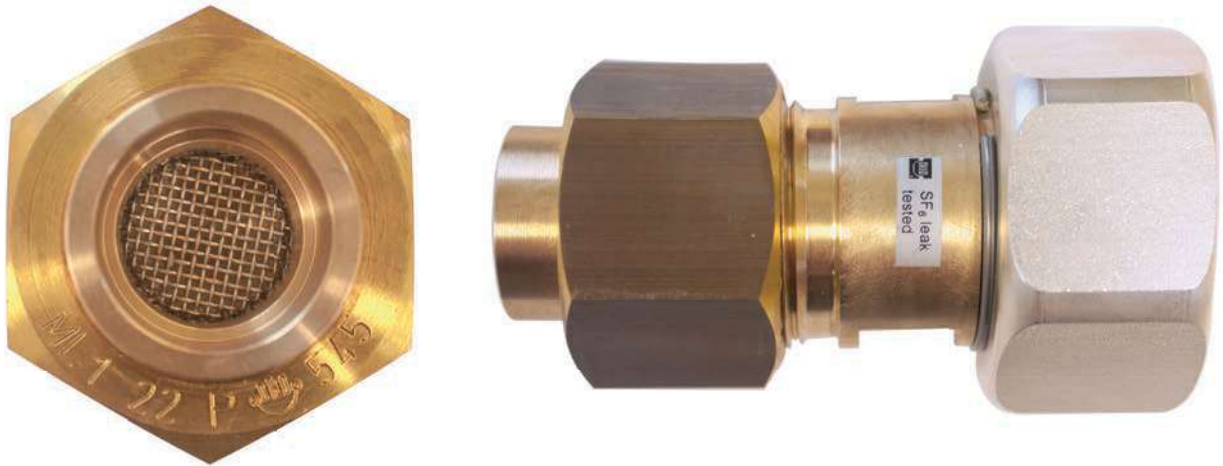
Suitable connecting parts



PN64 DN20
COUPLING TONGUE PART WITH AIR FILTER



Order No.: 6-1281-R001
Material: Brass



Description

This coupling tongue part allows gas compartments which are under vacuum to be flooded with air after the SF6 gas recovery and it is not necessary to use any service cart. The integrated 100-µm filter sieve prevents dirt particles from ambient air penetrating the gas compartment during the flooding process.

Suitable connecting parts

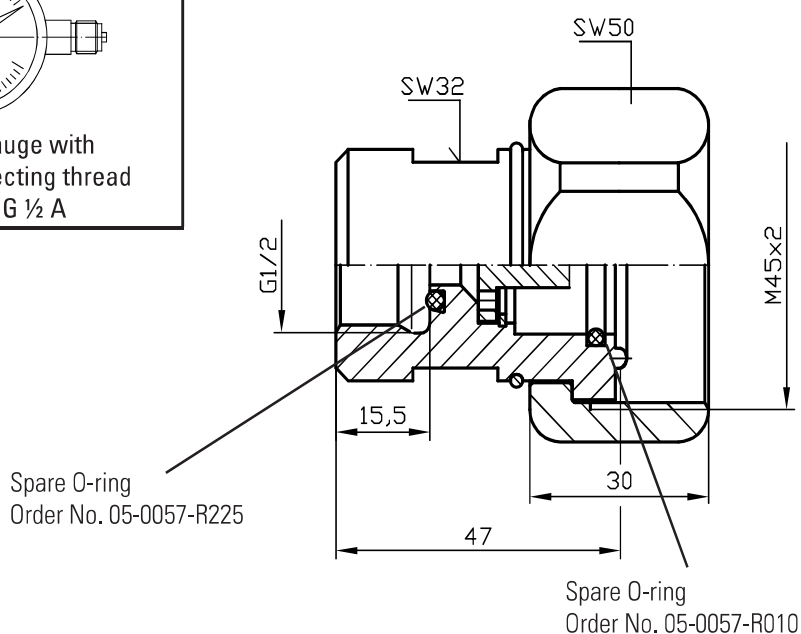
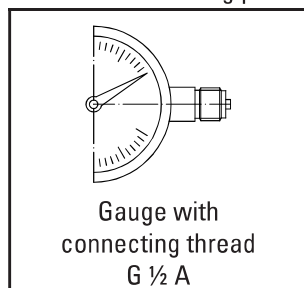
3-777-R001
VK/FL-01/20
3-685-R001
VK/A-02/20
VK/B-03/20 VK/BG-03/20

PN64 DN20 GAUGE CONNECTING COUPLING

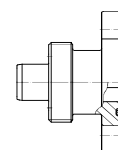


Order No.	Materials
SK-282-R020 T	AL
SK-282-R020 P	Brass

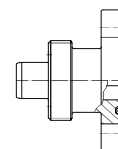
Suitable connecting parts



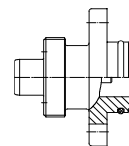
Suitable connecting parts



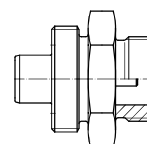
3-777-R001



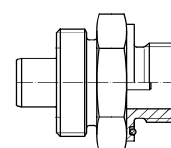
VK/FL-01/20



3-685-R001



VK/A-02/20

VK/B-03/20
VK/BG-03/20

Description:

The gauge connecting coupling serves as connecting piece to a coupling groove part DN20. When coupling, a pin in the gauge connecting coupling opens the flow of the opposite coupling groove part (forced opening). This allows to read the present operating pressure on the screwed-in gauge. When disconnecting, the conical nipple of the groove part is closed by spring load (pressure and vacuum tight). If the gauge connecting coupling is not connected the gauge shows „zero pressure“. The connecting coupling allows to install the gauge in any required position (rotatable 360°).